


UKRAINE COVID-19 DAILY SITUATION REPORT

January 18, 2022; 09:00



**МІНІСТЕРСТВО
ОХОРОНИ
ЗДОРОВ'Я
УКРАЇНИ**



**ЦЕНТР
ГРОМАДСЬКОГО
ЗДОРОВ'Я**


Dr. Jarno Habicht
WHO Representative
Kyiv, 04071, Ukraine
+38 044 428 55 55
<http://www.euro.who.int/en/countries/ukraine>

Dr. Victor Liashko
Minister of Health
Kyiv 01601, Ukraine
Tel.: +380 44 200 0790
<http://www.moz.gov.ua>

Public Health Center of the
Ministry of Health of Ukraine
Kyiv, 04071, Ukraine
Yaroslavskaya st., 41
Tel.: +380 44 425 43 54
phc.org.ua
covid2019@phc.org.ua



CONFIRMED
3 768 088 (+8 558)

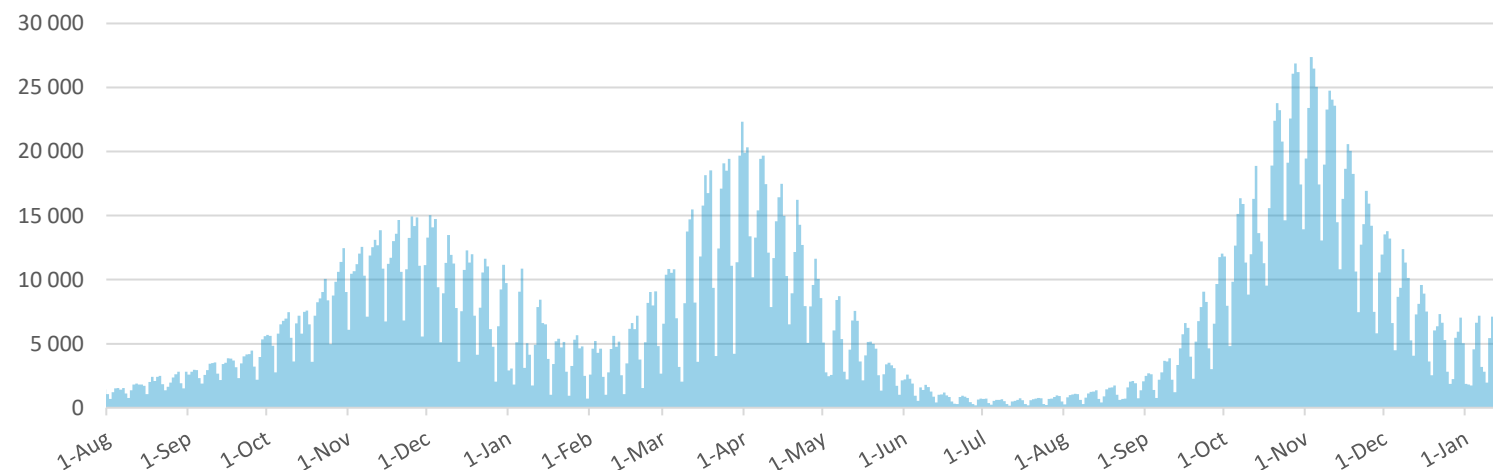


DEATHS
98 549 (+188)



RECOVERED
3 561 923 (+5 761)

Confirmed cases by the date of reporting



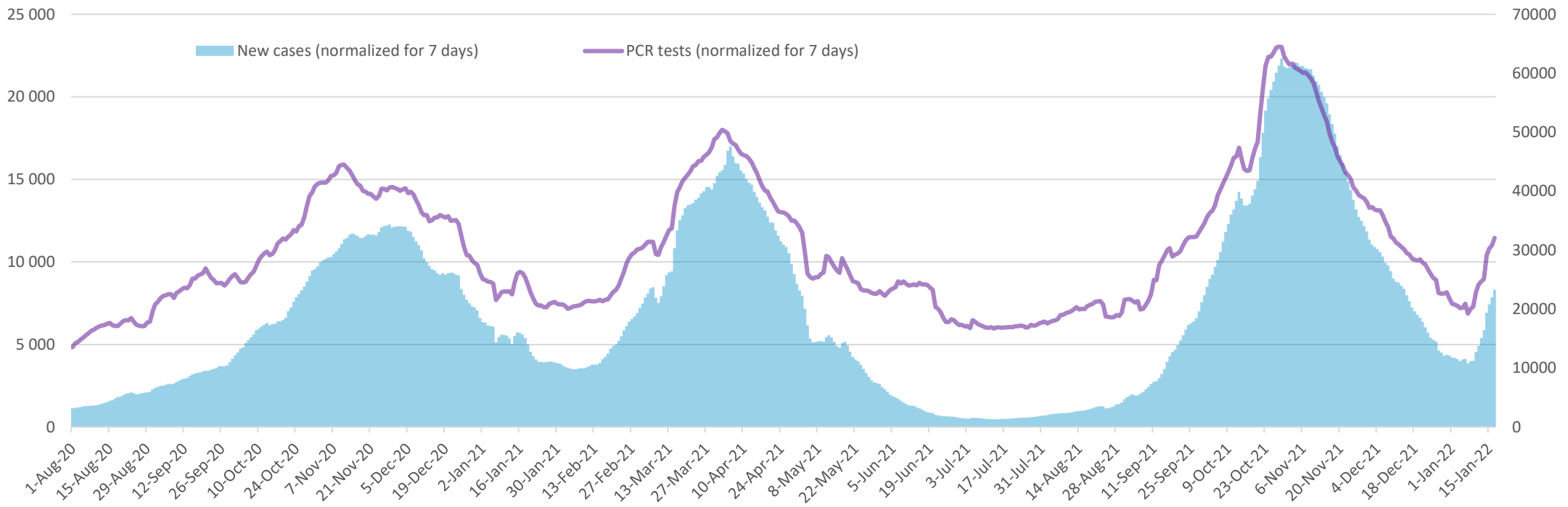
Top-5 regions by cases in last 30 days

Region	Cases	%
Kyiv city	25 081	15,9%
Lviv	11 361	7,2%
Ivano-Frankivsk	9 246	5,9%
Kharkiv	9 017	5,7%
Poltava	8 130	5,2%
Others	94 566	60,1%

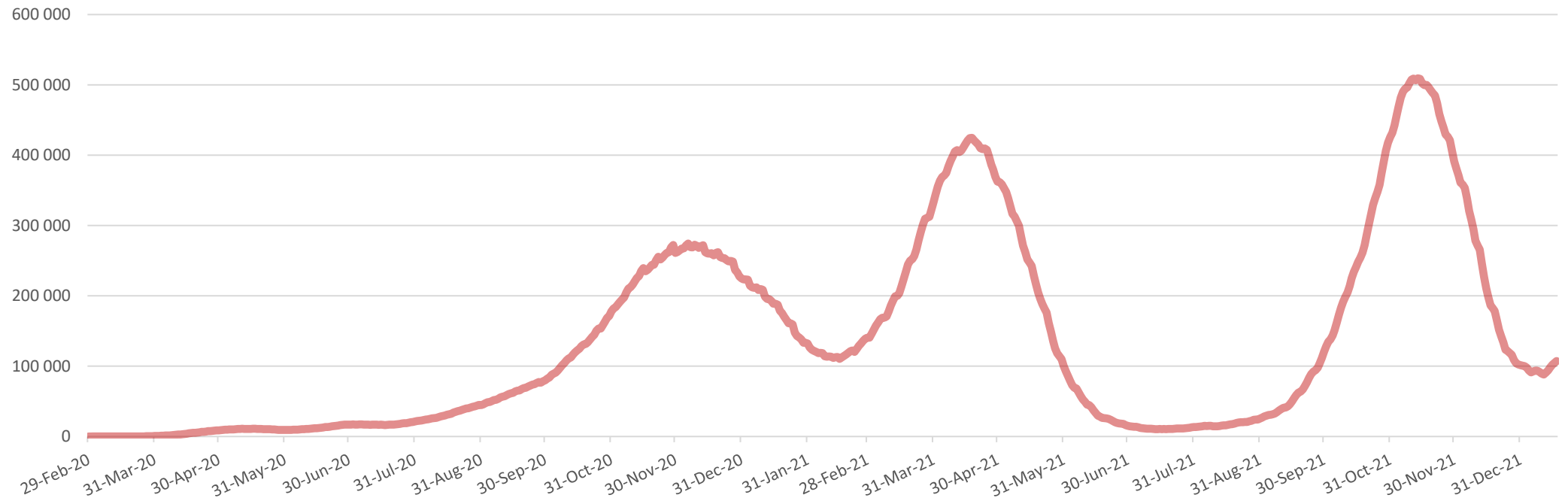
General information

Data source used in this daily situation report is provided
by the [Ministry of Health of Ukraine](http://www.moz.gov.ua)
and by [the Public Health Center of the Ministry of Health of Ukraine](http://phc.org.ua).

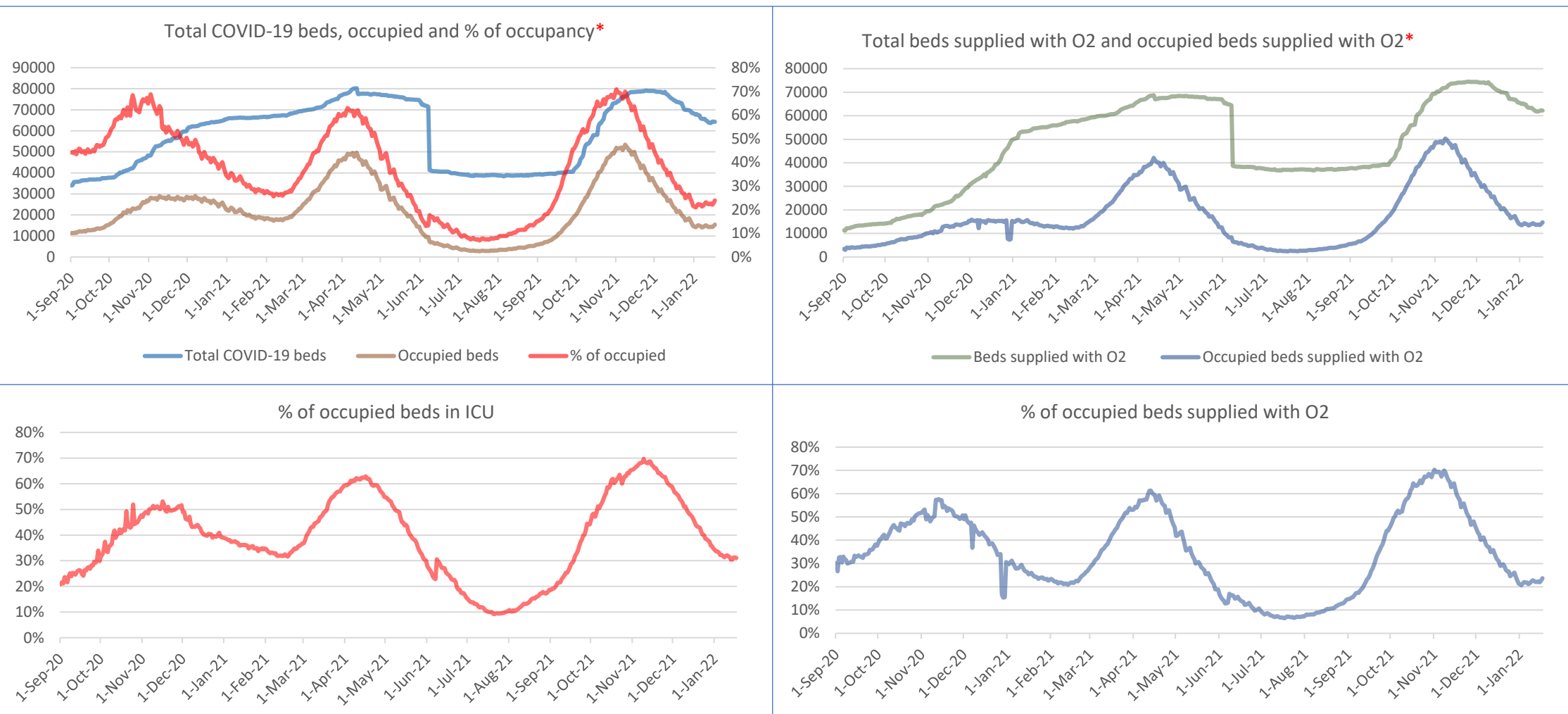
Comparison of number of daily confirmed cases and daily PCR tests (normalized for 7 days)



Trend in a total number of active cases



Selected indicators showing hospitalization trends



Regions with highest increase and general information

Current regions with highest share of occupied beds supplied with oxygen:

- Ivano-Frankivsk region – 45.9%
- Vinnytsya region – 38.5%

Share of beds occupied by suspected and confirmed cases in the same regions:

- Ivano-Frankivsk region – 46.1%
- Vinnytsya region – 39.7%

Share of beds occupied in ICU:

- Ivano-Frankivsk region – 42.6%
- Vinnytsya region – 49.1%

Detailed information on hospital needs, bed occupancy, access to oxygen and other related issues you can find on [the dashboard via this link](#).

Information represented in the dashboard is provided by the Ministry of Health of Ukraine.

*a dropdown in the number of total COVID-19 beds and beds supplied with oxygen in June is due to the decision to reduce the number of COVID-19 designated hospitals.

Indicators for COVID-19 epidemic process in Ukraine

Region	Past 7-day cumulative cases	Past 7-day incidence	% change of 7-day cumulative incidence*	Past 14-days cumulative cases	Past 14-day incidence	% change of 14-day cumulative incidence*	Mortality per 100 000 population	Active cases	Active cases per 100 000 population
Kyiv city	6 404	216,0	11,6%	12 143	409,5	6,1%	282,5	9 959	335,9
Vinnysya	2 824	183,5	104,6%	4 204	273,1	72,9%	211,5	4 772	310,0
Volyn	808	78,4	96,1%	1 220	118,4	30,3%	215,9	1 563	151,7
Dnipropetrovsk	1 951	61,7	86,7%	2 996	94,7	50,9%	285,7	3 137	99,1
Donetsk	1 765	94,0	66,7%	2 824	150,4	8,4%	278,7	2 297	122,3
Zhytomyr	1 632	135,6	67,4%	2 607	216,6	58,7%	274,7	3 084	256,2
Zakarpattia	1 603	128,0	68,0%	2 557	204,1	35,2%	198,9	4 236	338,2
Zaporizhia	908	54,1	27,7%	1 619	96,4	1,6%	323,7	1 440	85,7
Ivano-Frankivsk	5 578	408,5	258,9%	7 132	522,4	181,1%	232,1	9 304	681,4
Kyiv oblast	2 142	120,2	47,6%	3 593	201,6	26,2%	268,3	4 370	245,2
Kirovograd	510	54,9	40,5%	873	94,0	22,6%	172,0	1 649	177,6
Luhansk	629	93,6	32,1%	1 105	164,3	37,6%	333,6	1 242	184,7
Lviv	5 863	233,9	195,8%	7 845	313,0	115,5%	243,8	9 816	391,6
Mykolaiv	966	86,6	41,4%	1 649	147,8	28,4%	300,6	1 886	169,0
Odesa	2 576	108,5	69,1%	4 099	172,7	15,1%	238,4	8 169	344,1
Poltava	2 266	164,0	39,9%	3 886	281,3	11,2%	281,4	4 126	298,7
Rivne	1 803	156,6	117,0%	2 634	228,8	80,5%	202,0	2 463	213,9
Sumy	3 083	290,0	137,0%	4 384	412,4	108,2%	274,2	4 769	448,6
Ternopil	2 441	235,6	130,3%	3 501	338,0	94,5%	210,2	3 804	367,2
Kharkiv	4 406	166,3	110,1%	6 503	245,4	99,5%	245,1	9 527	359,6
Kherson	692	67,6	45,7%	1 167	114,0	62,8%	266,3	1 468	143,4
Khmelnysky	2 182	174,4	64,1%	3 512	280,8	44,5%	273,7	4 508	360,4
Cherkasy	1 446	121,8	36,8%	2 503	210,9	4,2%	229,6	3 775	318,1
Chernivtsi	2 571	285,7	209,8%	3 401	378,0	137,7%	340,5	3 754	417,2
Chernihiv	1 168	118,4	33,5%	2 043	207,2	26,0%	256,8	2 498	253,3
Ukraine	58 217	152,9	69,6%	90 000	236,3	44,5%	258,8	107 616	282,6

**(Current 14/7-day cumulative incidence – 14/7-day cumulative incidence one week ago) / 14/7-day incidence one week ago.*

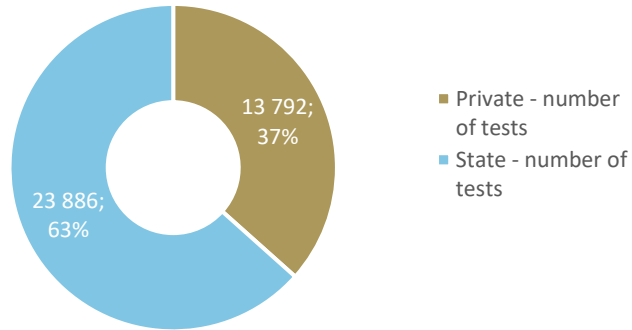
Green – decline in % change.

Yellow – slight increase (from 0% to 20%).

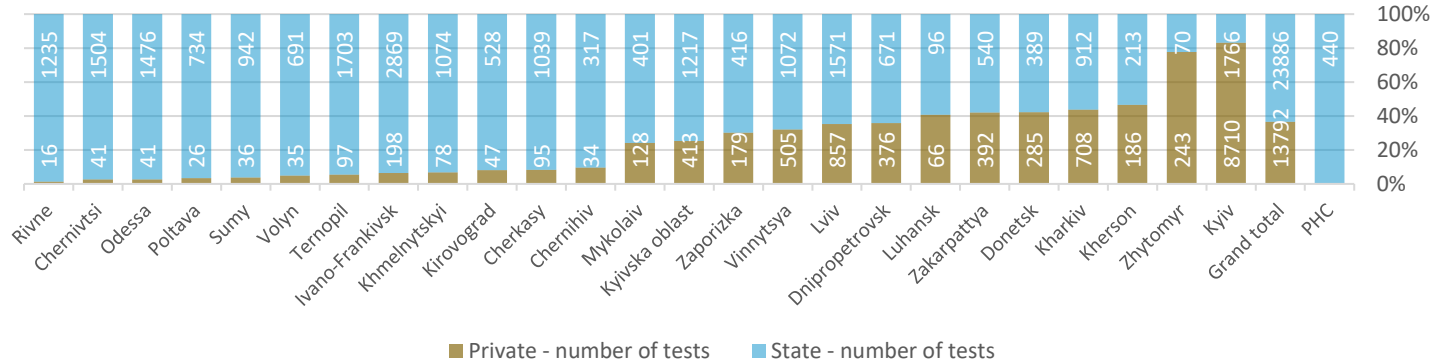
Red – significant increase (higher than 20%).

Daily information about testing in regions (as of January 18; 09:00)

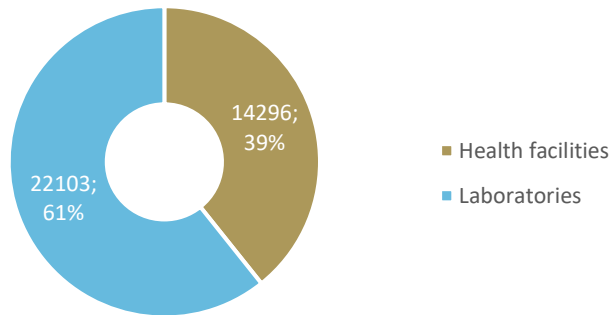
PCR tests done in private and state labs



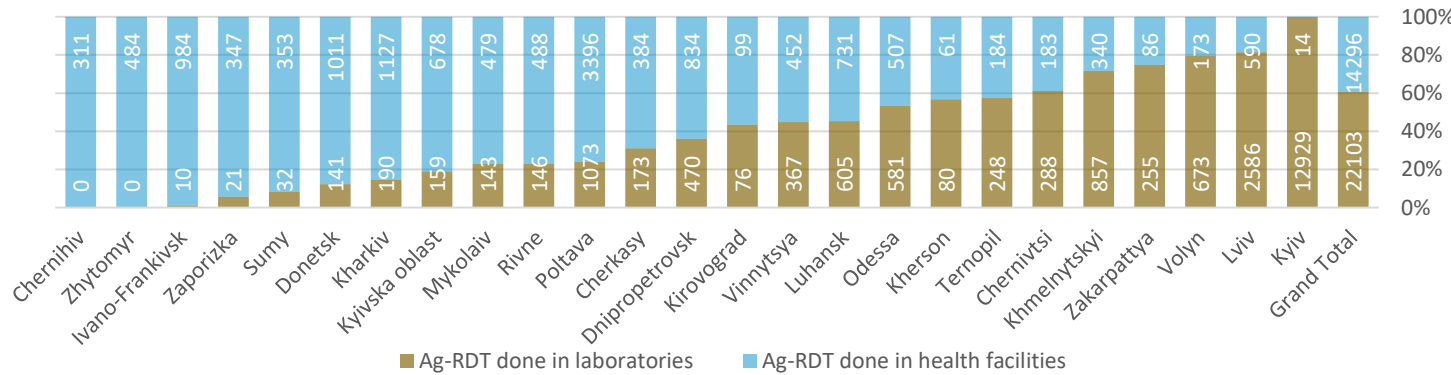
Share of PCR tests done in private and state labs



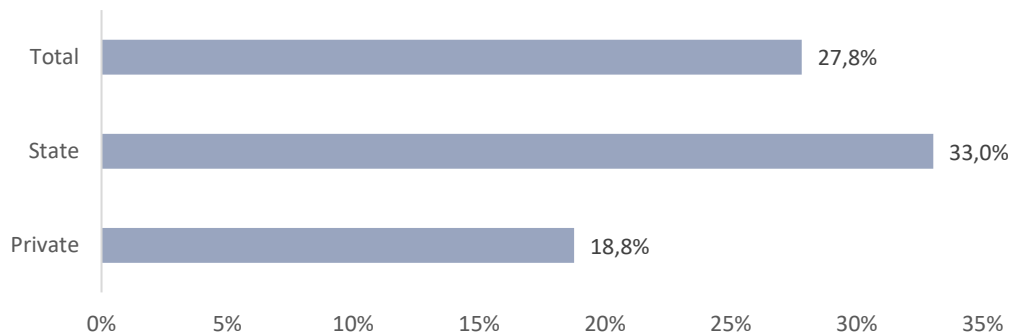
Ag-RDT done in laboratories and health facilities



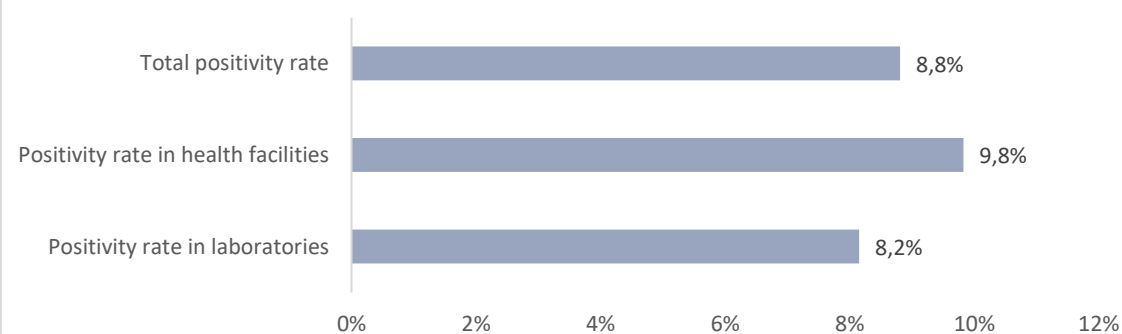
Share of Ag-RDT done in health facilities and laboratories



Daily positivity rate (PCR) in private and state labs



Daily positivity rate (Ag-RDT) in laboratories and health facilities

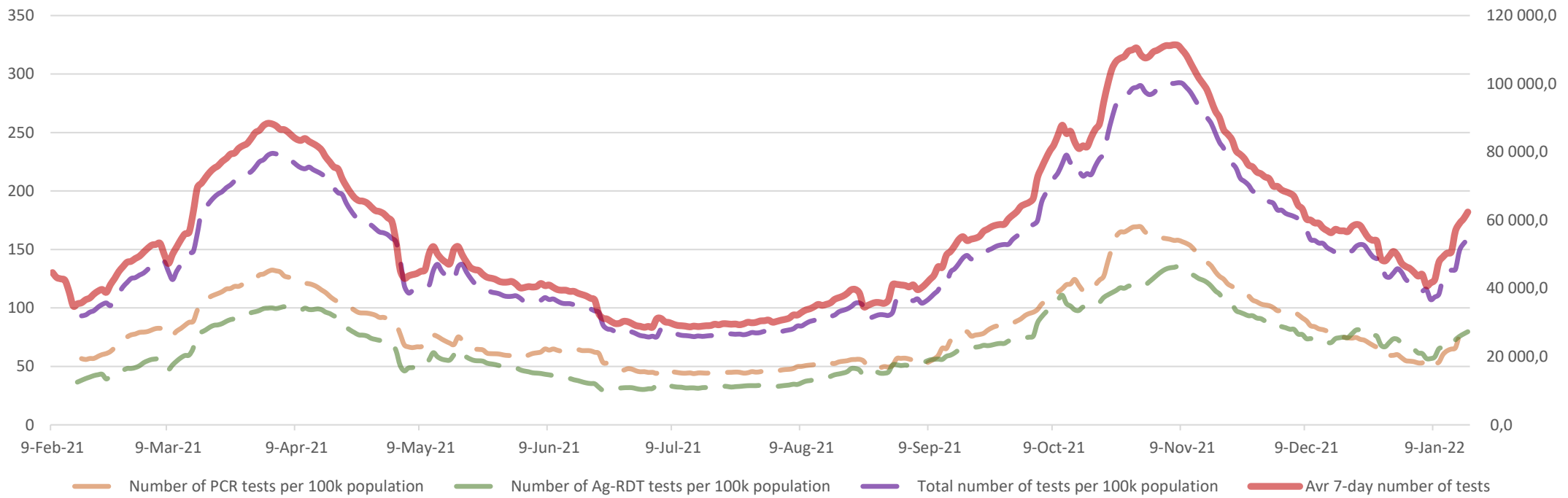


Total number of tests:

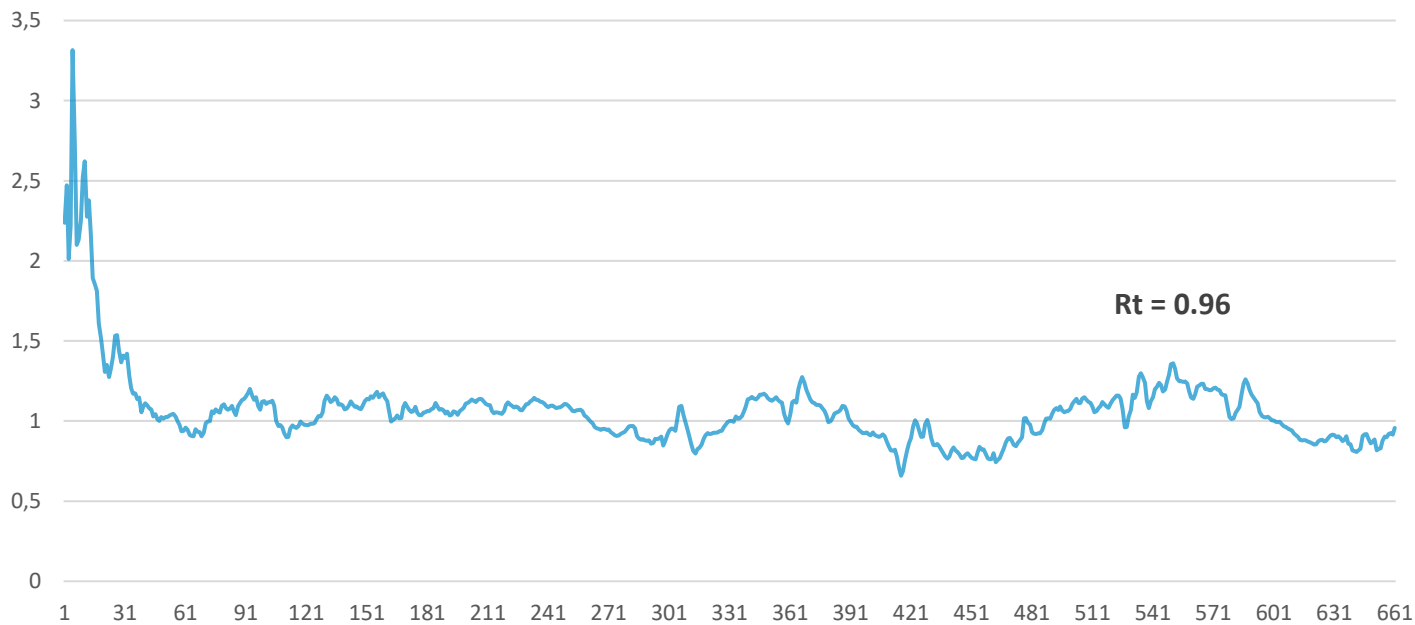
PCR: 17 220 495

Ag-RDT: 8 906 810

Number of tests per 100,000 population (averaged for 7 days)



Estimated median reproduction number based on date of reporting (7 day moving average)



Relevant links

- [Vaccination in Ukraine](#)
- [WHO Euro Regional interactive dashboard](#) (English)
- [WHO Euro Regional interactive dashboard](#) (Russian)
- [Daily situation report](#)
- [Updated WHO advice for international travel](#)
- [WHO global interactive dashboard](#)
- [Public Health Center of the MoH](#)
- [Coronavirus in Ukraine](#)